

CEDAR/GEM 2005 Workshop Optional Tours

Tuesday, June 28, 2005

Cooking School

Time: 10:00am–1:00pm



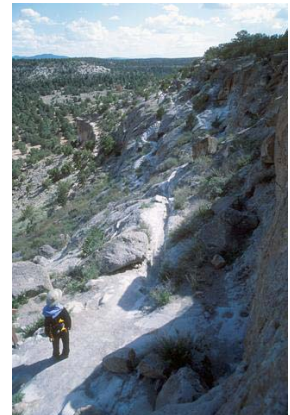
Our local cooking school, located just off The Plaza, showcases regional chefs demonstrating and serving delicious Southwestern, New Mexican or Traditional Mexican cuisine. Enjoy a culinary lesson, experience Southwestern style cooking and eat the rewards. Today's menu is Classic New Mexican Green Chile Stew, Blue Corn and Green Chile Muffins, Piñon Butter, Quesadillas, Salsa Fresca and Rich Natillas.

COST: \$55 per person includes recipes, instruction and lunch and tax. No minimum.

Tsankawi Ancient Cave Dwellers Tour

Time: 1:30pm–6:00pm

This is an in-depth introduction to the fascinating and complex historic and pre-historic Pueblo Indian civilizations. Travel through beautiful countryside, across the Rio Grande and into the shoulders of the magnificent Jemez Mountains. Tsankawi is part of the Bandelier National Monument, but is considered an OEoutlier. As such, it has been excavated many times, but never reconstructed. Over the 1 1/2 mile hike, you will climb up and down ladders, walk along a volcanic ridge, crawl into smoke-blackened caves and immerse yourself into early Pueblo civilization at the ancestral home of the pre-historic Pueblo Indians. Savor the same views seen by generations of Native Americans who lived here 600 years ago. This is an area so alive with the past that you can almost hear the drumbeats of the ancient ones. This is a dramatic and exciting hike exploring 10,000 years of history, geology, anthropology and archaeology.



COST: \$35 per person based on a minimum of 20 participants. Includes professional guides, bottled water, and entrance fees and tax.

Wednesday, June 29, 2005

Museum Hill Tour

Time: 9:45am–12:30pm

An overview of the best of Santa Fe's Museums! Begin at Santa Fe's most unique museum, the Museum of International Folk Art, one of the highlights of a visit to Santa Fe. Celebrate folk art from over 100 countries, with displays of elaborate dioramas from 19th century Germany, New Mexican quilts, Mexican masks, South American and African puppets, amulets, talismans, and an endless array of figurines and ceremonial clothing. The "Neutrogena Wing" displays fabulous textiles from around the world. The Museum of Indian Arts and Culture is also atop "Museum Hill," and introduces the historical and contemporary lives of the Pueblo, Navajo, and Apache cultures.



End at the Museum of Spanish Colonial Arts where more than 3,000 objects, and contains one of the most comprehensive collections of Spanish Colonial art, featuring textiles, tinwork, silverwork, ceramics, furniture, and books. The art dates from the Middle Ages to the 21st century.

COST: \$35 per person, based on a minimum of 20 participants required and includes professional guides, 4-Day Museum Pass and gratuities and tax.

Easy Hike to Tent Rocks

Time: 1:30pm–6:00pm



Join us for an easy hike to the unique geological area known as Kasha-Katuwe Tent Rocks. Tent Rocks is an area that features large, tent-shaped rocks hugging the steep cliffs of Peralta Canyon. These rocks were created by the powerful forces of vulcanism and erosion, which have built up and then torn down this landscape. While uniform in shape, the tent rock formations vary in height from just a few feet to over 90. Most of the trail is a gradual sloping path through a slot canyon. A steep climb to the top of the mesa is available at the end of the trail for those interested. Please bring layered clothing, good walking shoes and sunscreen.

COST: \$35 per person, based on a minimum of 20 participants. Includes professional guides, bottled water, and entrance fees and tax.

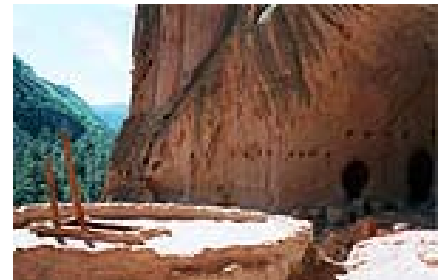
Thursday, June 30, 2005

Bandelier National Monument and Bradbury Museum

Time: 1:30pm–6:30pm



Travel northwest out of Santa Fe to Bandelier National Monument, and descend into a canyon filled with the ruins of the Anasazi Indians, colloquially “the Ancient Ones.” Located on the Pajarito Plateau of the Jemez Mountains, Bandelier was the home of the Anasazi from the eleventh to fourteenth centuries. Excavated over 90 years ago, these ruins were once home to over 200 people, ancestors of today’s Pueblo Indians. Walk along easy paths past the remains of ancient Pueblo dwellings, to the cliff dwellings where they can climb ladders to peer inside. If time permits, take a walk further up the path that leads to the Ceremonial Cave, where the Anasazi and later descendants held spiritual rites and celebrations. From Bandelier the group will move on to Los Alamos where they will visit the Bradbury Museum. The Bradbury recounts the history of the atomic age and the details of the Manhattan Project in Los Alamos. From the museum the group will return to the hotel.



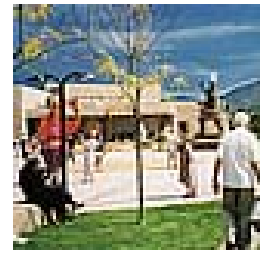
COST: \$35 per person, based on a minimum of 20 guests required. Price includes certified, professional guides, monument entrance fees, museum entrance, bottled water and guide and tax.

Friday, July 1, 2005

Museum Hill Tour

Time: 9:45am–12:30pm

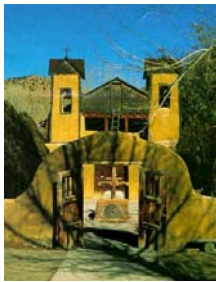
An overview of the best of Santa Fe’s Museums! Begin at Santa Fe’s most unique museum, the Museum of International Folk Art, one of the highlights of a visit to Santa Fe. Celebrate folk art from over 100 countries, with displays of elaborate dioramas from 19th century Germany, New Mexican quilts, Mexican masks, South American and African puppets, amulets, talismans, and an endless array of figurines and ceremonial clothing. The “Neutrogena Wing” displays fabulous textiles from around the world. The Museum of Indian Arts and Culture is also atop “Museum Hill,” and introduces the historical and contemporary lives of the Pueblo, Navajo, and Apache cultures. End at the Museum of Spanish Colonial Arts where more than 3,000 objects, and contains one of the most comprehensive collections of Spanish Colonial art, featuring textiles, tinwork, silverwork, ceramics, furniture, and books. The art dates from the Middle Ages to the 21st century.



COST: \$35 per person, based on a minimum of 20 participants required and includes professional guides, 4-Day Museum Pass and gratuities and tax.

Chimayo Tour

Time: 2:00pm–6:00pm



Begin your adventure at the rustic, Hispanic village of Chimayó, located in a beautiful valley in the foothills of the Sangre de Cristo Mountains. Your first stop will be at the charming Santuario de Chimayó, known as the “*Lourdes of the Southwest*” because the ground upon which the church stands is believed by the faithful to contain healing powers. The Santuario is famous for its historic location, native Spanish architecture and beautiful renderings of traditional Hispanic “*Santos*.” Your guide will lead you through the church and adjacent grounds, recounting the history of the Santuario and the countless stories of the miraculously healed. Then it’s on to Centinela, where seven generations of the Trujillo family have created their spectacular Spanish-style weavings. Centinela has the finest weavings in the region, yet is not generally known to tourists.

COST: \$35 per person based on a minimum of 20 participants. Includes professional guides, bottled water, and donations to the church and tax.

Cooking School

Time: 2:00pm–5:00pm



Our local cooking school, located just off The Plaza, showcases regional chefs demonstrating and serving delicious Southwestern, New Mexican or Traditional Mexican cuisine. Enjoy a culinary lesson, experience Southwestern style cooking and eat the rewards. Our new “*Chile Class*” will help those unfamiliar with our local chile gain a better understanding of New Mexico’s official state vegetable! Participants will learn what makes chile unique, explore different varieties of chile, and learn how to handle them safely. After that, we’ll put on aprons and make red chile

sauce, green chile sauce, and homemade corn tortillas to taste!

COST: \$40 per person includes recipes, instruction, tax and a tasting of New Mexico!

**Optional Santa Fe Tours for
CEDAR/GEM 2005 Workshop**

Name: _____
Address: _____
City/State/Zip: _____
Phone: _____
Email Address: _____

6/28	10:00am	COOKING CLASS	# of reservations _____ @ \$55 _____
6/28	1:30pm	TSANKAWI	# of reservations _____ @ \$35 _____
6/29	9:45am	MUSEUM HILL	# of reservations _____ @ \$35 _____
6/29	1:30pm	TENT ROCKS	# of reservations _____ @ \$35 _____
6/30	1:30pm	BANDELIER	# of reservations _____ @ \$35 _____
7/1	9:45am	MUSEUM HILL	# of reservations _____ @ \$35 _____
7/1	2:00pm	CHIMAYO TOUR	# of reservations _____ @ \$35 _____
7/1	2:00pm	COOKING CLASS	# of reservations _____ @ \$40 _____

Payment: **Credit Card** (or) **Check** (*payable to Eldorado Hotel*) (or) **Room Charge**
Credit Card Type: _____
Expiration Date: _____
Account No.: _____
Signature (as it appears on credit card): _____

Please register at your earliest convenience, but no later than June 22, 2005.

Please fax or mail this form to:

Santa Fe Destinations

309 E. San Francisco Street, Santa Fe, NM 87501, Telephone: 505-995-4524 / Fax: 505-995-4548

Cancellation Policy: Tours not meeting minimum numbers 4 days prior to scheduled departure are likely to be cancelled. Registrants canceling up to 48 hours prior to a scheduled event will receive a 100% refund less a \$5 administrative fee. Registrants canceling up to 24 hours prior to a scheduled event will receive a 50% refund. Cancellations less than 24 hours prior to scheduled event will not receive any refunds. Since registering for an activity will be guaranteeing a space for that tour or activity, our cancellation policy will be strictly enforced. Please note that payments will not be processed until it is clear that the tour or event will be taking place. Guests will not be charged for events cancelled by Santa Fe Destinations. Santa Fe Destinations will contact each guest by phone if an event has been cancelled.

***GUESTS WILL BE MET BY SANTA FE DESTINATIONS STAFF
IN THE ELDORADO HOTEL LOBBY FOR ALL ACTIVITIES***